

28. **High Mountain Lake.** View, after a tough climb, of a lake and mountains in Rocky Mountain National Park in Colorado. 14 x 11; photograph; 2006; \$ 200

NOTE: THE FOLLOWING IMAGES APPEAR BEHIND THE LIBRARY FRONT DESK AND CAFÉ AREA.

29. **Painted Clouds Over a Painted Desert** was taken at the Petrified Forest National Park in Arizona and shows the colors of the Painted Desert. Even the bottom of the clouds reflect the rich hues of the landscape. 11 x 14; photograph; 2004; \$ 200



30. **Colorado Waters** is from a valley in Rocky Mountain National Park. Besides the water itself, I noticed the amazing variety of plants and trees that make up this landscape. 11 x 14; photograph; 2006; \$ 200

31. **Side Entrance, Acuna, Mexico** is a hotel in Acuna with the most beautiful alley I think I have ever seen. 11 x 14; photograph; 2003; \$ 200



32. **Mexican Chickens.** From a souvenir shop in Acuna, Mexico. 11 x 14; photograph; 2003; \$ 200

34. **Mexican Lizards.** From the same souvenir shop in Acuna, Mexico. The ceramics seemed to be facing off. 11 x 14; photograph; 2003; \$ 200



35. **Acuna Rush Hour.** Just across the Rio Grande River from Del Rio, Texas, the small Mexican town of Acuna suddenly came alive near noon as people rushed home for the afternoon siesta. The date was July 4, 2003. 11 x 14; photograph; 2003; \$ 200

Thank you for your attention. These images and more can be seen at Bob's website:

www.bobbickers.net

This exhibition was sponsored by and a portion of the sales from this exhibit will benefit
**Friends of the
Monroeville Public Library**

Please contact the library staff if you wish to make a purchase.

Advertised sale prices do not include appropriate local and state sales taxes. Artwork on display will be released to the purchaser at the end of the show on April 2, 2007.

Giclees and Reprints are available near the front desk for immediate purchase. If you cannot find a reprints or giclee you wish to purchase, please notify the library staff or contact artist Bob Bickers at:

FINE ART BY BOB BICKERS
4029 Benden Circle
Murrysville, PA 15668

724-325-4951

E-mail: bobbickers@windstream.net

Or visit our website at:

www.bobbickers.net

Many thanks to all those who have made this show possible including the staff at the Monroeville Public Library, Sally Wightkin and her staff and helpers and especially my wife, Diane, who has been a big help and inspiration in my artistic endeavors. I couldn't do it without you. —Bob Bickers

© 2007 by Bob Bickers. All Rights Reserved.



Earth and Sky
Images of the American West
Photographs and Oil Paintings
of
Bob Bickers
at
The Gallery Space
The Monroeville Public Library
4000 Gateway Campus Blvd.
Monroeville, Pennsylvania 15146

March 2—April 2, 2007

**PROGRAM
GUIDE**

**→THIS BROCHURE IS FREE←
TAKE ONE HOME!**



1. Rocky Mountain Summer was photographed last July at Rocky Mountain National Park in Colorado. This meadow must be one of my favorite places on Earth. 11 x 14; photograph; 2006; \$ 200

2. Lake Powell On High was taken from a hilltop with one of the most spectacular sights in all the West — deep blue water in the middle of hot southern Utah desert. And the water was as cold as the rocks were hot! 11 x 14; photograph; 2004; \$ 200



3. Do Not Pass is one of my favorite photos, taken while driving through the Navajo Indian Reservation in northeast Arizona. 11 x 14; photograph; 2004; \$ 200

4. Rocky Mountain Vista shows the backbone of Rocky Mountains at Rocky Mountain National Park. The pink granite is evident even from a distance. The elevation here is about 12,000 feet. 11 x 14; photograph; 2006; \$ 200



5. Mountain Palette. Here are colors of the granite and alpine flowers found above the tree line on Pike's Peak in Colorado. 14 x 11; photograph; 2006; \$ 200

6. East Grand Canyon was taken from a point on the eastern side of the Grand Canyon called "Desert View". It is one of my favorite vantage points to see this wonderful canyon in Arizona. 11 x 14; photograph; 2004; \$ 200



7. Jaws That Never Chew is the first thing that came to mind when I saw this Agave plant in Texas as the thorns reminded me of teeth. 14 x 11; photograph; 2003; \$ 200

8. Forest Above the Tree Line is a beautiful little area of wild flowers I found while driving down the slope of Pike's Peak near Colorado Springs. 11 x 14; photograph; 2006; \$ 200



9. Mile Marker 556. North of the Grand Canyon across the expanses of northern Arizona, one can sometimes drive for hours and never see another vehicle. Individual miles lose their meaning as they melt in the sun. 11 x 14; photograph; 2004; \$ 200

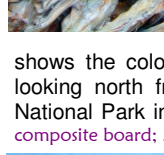


10. Reclining Rock. The way to the north rim of the Grand Canyon requires a climb up the face of an escarpment from which you see this vantage point. The boulder in the foreground as well as the cliff itself suggested they were reclining. 11 x 14; photograph; 2004; \$ 200

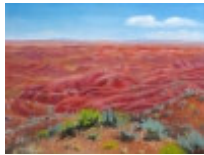
11. Open Door Policy was a name that came to mind as I noticed that this business in Acuna, Mexico, kept its front door open to deal with the July heat. 14 x 11; photograph; 2003; \$ 200



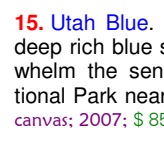
12. Rocky Mountain Roots. This view of upturned tree roots was taken on the shore of the same lake in Rocky Mountain National Park that is depicted in Image Number 28. 14 x 11; photograph; 2006; \$ 200



13. Painted Desert Noon. This oil painting shows the colors of the painted desert looking north from the Petrified Forest National Park in Arizona. 11 x 14; oil/wood composite board; 2007; \$ 350



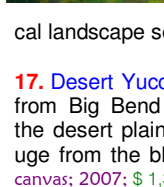
14. High Plains Road. Desert spaces spread out for miles and miles near Lake Powell in northern Arizona / southern Utah. 11 x 14; oil/wood composite board; 2007; \$ 350



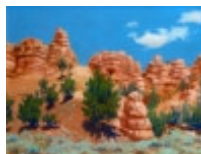
15. Utah Blue. I wanted to convey the deep rich blue sky that can almost overwhelm the senses here at Arches National Park near Moab, Utah. 22 x 28; oil/canvas; 2007; \$ 850



16. Big Bend Afternoon shows a late afternoon summer scene at Big Bend National Park in Texas (so named due to the big bend the Rio Grande River makes as it winds its way to the Gulf of Mexico). Dragonflies were in great abundance while the vertical landscape seemed surreal. 24 x 36; oil/canvas; 2007; \$ 1,500



17. Desert Yucca. This is another scene from Big Bend National Park down on the desert plain where there is little refuge from the blistering sun. 22 x 28; oil/canvas; 2007; \$ 1,350



18. Utah Junipers is a roadside view of Juniper trees and rocks in southwest Utah. Here the altitude is higher, the climate colder and the landscape is a riot of color. 11 x 14; oil/wood composite board; 2007; \$ 350



19. Rio Grande Beach. The riverbank at Big Bend National Park and our border with Mexico. The river is calm today. The opposite bank and cliffs are in Mexico. 11 x 14; oil/composite board; 2007; \$ 350

20. River of Color. I had just taken the photo shown in Image Number 1 when I walked to the edge of the stream and saw this sight with red lichen on the rocks, green algae and plants and reflected in the water the yellow flowers on the opposite bank and the incredible blue sky. What more could a photographer of color ask for? 14 x 11; photograph; 2006; \$ 200



21. Desert View. This is a view of the Painted Desert from an historic building (now a visitor center) at the Petrified Forest National Park in eastern Arizona. 14 x 11; photograph; 2004; \$ 200

22. The Narrow Pass is from Big Bend National Park not far from the place that was the inspiration for the painting *Big Bend Afternoon* (Image Number 16). How many ridges of mountains can you make out in the distance? 11 x 14; photograph; 2003; \$ 200



23. Big Bend Desert - Left. This is the left side of a dual photo of a stretch of desert at Big Bend National Park in Texas. 11 x 14; photograph; 2003; \$ 200

24. Big Bend Desert - Right. This is the left side of a dual photo of a stretch of desert at Big Bend National Park in Texas. 11 x 14; photograph; 2003; \$ 200



25. Navajo Town. This small community with an impressive backdrop is on the Navajo Reservation in Arizona north of the Grand Canyon. 11 x 14; photograph; 2004; \$ 200

26. Last Stand. Half-way up the slope of Pike's Peak in Colorado is this clustering of rocks suggesting that while at least this portion of the mountain is still standing, it will ultimately lose the war with erosion which will one day turn this landscape into a flat plain. 11 x 14; photograph; 2006; \$ 200



27. Flaming Cliffs. Another amazing sight on the road to the north rim of the Grand Canyon. Navajo Indians make their home among these cliffs and valleys. 11 x 14; photograph; 2004; \$ 200