

PRICE LIST

1. Cook Forest Stream..... \$300
2. Westmoreland October..... \$200
3. Autumn Falls..... \$100
4. House on the Horizon..... \$200
5. Westmoreland Hills..... \$400
6. Frozen Dawn..... \$150
7. Reclining Rock..... \$100
8. High Plains Road..... \$200
9. Utah Junipers..... \$250
10. Desert Yucca..... \$850
11. Big Bend Afternoon..... \$950
12. New Mexico Colors..... \$200
13. Painted Desert Noon..... \$200
14. Rio Grande Beach..... \$250
15. Flaming Cliffs..... \$150
16. Jaws That Never Chew..... \$175
17. Forest Above the Tree Line..... \$175
18. Rocky Mountain Roots..... \$200
19. Do Not Pass..... \$250
20. Desert View..... \$200
21. East Grand Canyon..... \$175
22. River of Color..... \$175
23. Side Entrance, Acuna, Mexico..... \$100
24. Acuna Rush Hour..... \$100
25. August Afternoon..... \$400
26. Autumn's End..... \$300
27. Westmoreland Harvest..... \$800

Artwork on display will be released to the purchaser at the end of the show on October 30, 2007.

FINE ART BY BOB BICKERS

4029 Benden Circle
Murrysville, PA 15668

724-325-4951

E-mail: bobbickers@windstream.net

Learn more about Bob and his artwork at:

www.bobbickers.net



Bob Bickers produces original paintings and artwork in oil, alkyd, acrylic, pen & ink, and gouache. He uses the finest materials available to insure quality and with an eye on creating artwork that will last. In addition, Bob is an experienced professional photographer and offers services in photography and digital computer graphics. Bob is also available for commissions.

The **Undercroft Gallery** is located in Shady-side at the **First Unitarian Church**, at the corner of Morewood Avenue and Ellsworth Avenue, Pittsburgh, Pennsylvania.

The gallery is open to the public Tuesday through Thursday, 10:00am to 3:00pm and on Sunday 12:00pm to 2:00pm.

Many thanks to Bob Cook and the fine people of the First Unitarian Church who were so gracious and willing to open their fine gallery up to the public and made this exhibition possible. I sincerely appreciate this wonderful opportunity and cannot thank you enough. —Bob Bickers



East Meets West

Art of the American West
and Western Pennsylvania Art

Photographs and Oil Paintings
of

Bob Bickers

at

The Undercroft Gallery

First Unitarian Church

Shadyside at Morewood Ave. and Ellsworth Ave.,
Pittsburgh, Pennsylvania

September 30—October 30, 2007

MEET THE ARTIST RECEPTION in the gallery on
Sunday, October 14th 12:00pm—2:00pm

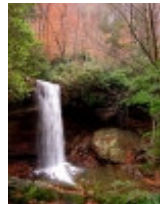
PROGRAM GUIDE

→THIS BROCHURE IS FREE←



1. Cook Forest Stream was inspired after an accidental fall down a ravine where I came upon this scene at Cook Forest State Park in Clarion County, PA. 18 x 24; oil/canvas; 2002; \$ 300

2. Westmoreland October depicts a sheep farm in a small valley near Donegal, Pennsylvania. 18 x 24; oil/canvas; 2002; \$ 200



3. Autumn Falls is a November photograph of Cucumber Falls at Ohiopyle State Park showing a notable increase in water flow. 10 x 8; photograph; 2004; \$ 100

4. House on the Horizon. This wonderfully colored little house is set northeast of Murrysville, PA. 11 x 14; photograph; 2004; \$ 200



5. Westmoreland Hills is an image of farmland east of New Alexandria, PA. Since this was painted, the farm has turned into an automobile junkyard and an eyesore. 15 x 30; oil/canvas; 2005; \$ 400



6. Frozen Dawn. This is a winter painting of bottomland of the Conemaugh River Reservoir near Blairsville, PA. 14 x 18; oil/canvas; 2005; \$ 150



7. Reclining Rock. The way to the north rim of the Grand Canyon requires a climb up the face of an escarpment from which you see this vantage point. The boulder in the foreground as well as the cliff itself suggested they were reclining. 11 x 14; photograph; 2004; \$ 100



8. High Plains Road. Desert spaces spread out for miles and miles near Lake Powell in northern Arizona / southern Utah. 11 x 14; oil/wood composite board; 2007; \$ 200



9. Utah Junipers is a roadside view of Juniper trees and rocks in southwest Utah. Here the altitude is higher, the climate colder and the landscape is a riot of color. 11 x 14; oil/wood composite board; 2007; \$ 250



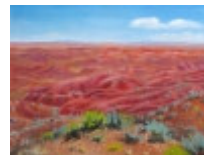
10. Desert Yucca. This is a scene from Big Bend National Park down on the desert plain where there is little refuge from the blistering sun. 22 x 28; oil/canvas; 2007; \$ 850



11. Big Bend Afternoon shows a late afternoon summer scene at Big Bend National Park in Texas (so named due to the big bend the Rio Grande River makes as it winds its way to the Gulf of Mexico). Dragonflies were in

great abundance while the vertical landscape seemed surreal. 24 x 36; oil/canvas; 2007; \$ 950

12. New Mexico Colors. Based on a scene near Lordsburg, New Mexico. 14 x 18; oil/canvas; 2005; \$ 200



13. Painted Desert Noon. This oil painting shows the colors of the painted desert looking north from the Petrified Forest National Park in Arizona. 11 x 14; oil/wood composite board; 2007; \$ 200

14. Rio Grande Beach. The riverbank at Big Bend National Park and our border with Mexico. The river is calm today. The opposite bank and cliffs are in Mexico. 11 x 14; oil/composite board; 2007; \$ 250



15. Flaming Cliffs. Another amazing sight on the road to the north rim of the Grand Canyon. Navajo Indians make their home among these cliffs and valleys. 11 x 14; photograph; 2004; \$ 150

16. Jaws That Never Chew is the first thing that came to mind when I saw this Agave plant in Texas as the thorns reminded me of teeth. 14 x 11; photograph; 2003; \$ 175



17. Forest Above the Tree Line is a beautiful little area of wild flowers I found while driving down the slope of Pike's Peak near Colorado Springs. 11 x 14; photograph; 2006; \$ 175

18. Rocky Mountain Roots. This view of up-turned tree roots was taken on the shore of a lake in Rocky Mountain National Park in Colorado. 14 x 11; photograph; 2006; \$ 200



19. Do Not Pass is one of my favorite photos, taken while driving through the Navajo Indian Reservation in northeast Arizona. 11 x 14; photograph; 2004; \$ 250

20. Desert View. This is a view of the Painted Desert from an historic building (now a visitor center) at the Petrified Forest National Park in eastern Arizona. 14 x 11; photograph; 2004; \$ 200



21. East Grand Canyon was taken from a point on the eastern side of the Grand Canyon called "Desert View". It is one of my favorite vantage points to see this wonderful canyon in Arizona. 11 x 14; photograph; 2004; \$ 175

22. River of Color. I was in a meadow at Rocky Mountain National Park in Colorado when I walked to the edge of the stream and saw this sight. Red lichen on the rocks, green algae and plants, and reflected in the water were yellow flowers on the opposite bank topped with an incredible blue sky. What more could a photographer of ask for? 14 x 11; photograph; 2006; \$ 175



23. Side Entrance, Acuna, Mexico is a hotel in Acuna, Mexico with the most beautiful alley I think I have ever seen. 11 x 14; photograph; 2003; \$ 100

24. Acuna Rush Hour. Lunchtime broke out in Acuna, Mexico and the streets were suddenly filled. Twenty minutes later and all was quiet. 11 x 14; photograph; 2003; \$ 100



25. August Afternoon. This is based on a barn on Cherry Road in Murrysville, PA. 18 x 24; oil/canvas; 2005; \$ 400

26. Autumn's End. The deep woods in Pennsylvania, near Ohiopyle. 18 x 24; oil/canvas; 2005; \$ 300



27. Westmoreland Harvest. This autumn scene is from an area northeast of Murrysville, PA. 24 x 36; oil/canvas; 2006; \$ 800

